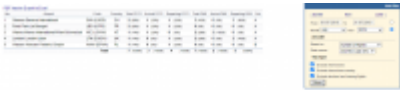


Top Destinations



Report 'Top Destinations' - the list of most popular destinations

With this report you can get the information about the **most popular destinations** you fly to.

On the screen, you can see details such as airport location, airport full name, IATA/ICAO code, number of flights (with the percentage of in the total number of flights), number of pax, airport category.

In the filter you can select: aircraft type & registration, data selected by a number of flights or number of pax, data source (Plan, Available, Journey Logs). You can also exclude home base country and technical / training flights.

From:
<https://wiki-draft.leonsoftware.com/> - Leonsoftware Wiki

Permanent link:
<https://wiki-draft.leonsoftware.com/leon/report-top-destinations>

Last update: 2020/08/12 11:17

